

SEMI STEP DECK

60,000 GVW - 80,000 GVW



**Air Lift
Front Deck**



**6' Self-cleaning
Angle Iron Beavertail
42" x 6' Angle Iron
Air Ramps**

BEHNKE
TRAILERS SINCE 1997

BT



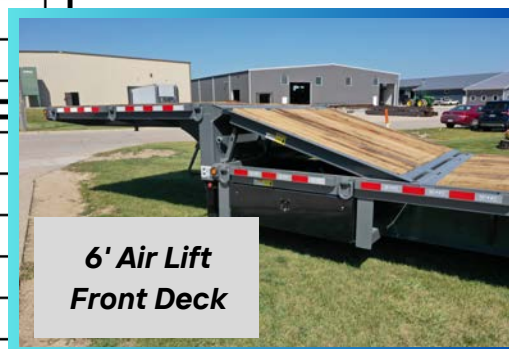
(563)744-3246

www.behnkeenterprises.com

60,000 GVW
80,000 GVW

SEMI STEP DECK

FLATBED



**6' Air Lift
Front Deck**

BEHNKE **BT**
TRAILERS

Model #	Top Deck	Bottom Deck	Width
FB8X45SS-OTR-60SL	10'	35'	102"
FB8X48SS-OTR-60SL	10'	38'	102"
FB8X53SS-OTR-60SL	10'	43'	102"

Deck Height 30" • Raised Fenders

(1) 22,500 lb. Air Brake Axles; Auto Slack Adjust & Park Brake, Non ABS

(1) 22,500 lb. Air Brake Axles; Auto Slack Adjust & Park Brake, ABS

(8) ST235-75R-17.5 (18-Ply) Tires on 8-Hole Dual Wheels

Model #	Top Deck	Bottom Deck	Width
FB8X45SS-OTR-60L	10'	35'	102"
FB8X48SS-OTR-60L	10'	38'	102"
FB8X53SS-OTR-60L	10'	43'	102"

Deck Height 35" • Steel Plate Above Tires

(1) 22,500 lb. Air Brake Axles; Auto Slack Adjust & Park Brake, Non ABS

(1) 22,500 lb. Air Brake Axles; Auto Slack Adjust & Park Brake, ABS

(8) ST235-75R-17.5 (18-Ply) Tires on 8-Hole Dual Wheels

Model #	Top Deck	Bottom Deck	Width
FB8X45SS-OTR-60H	10'	35'	102"
FB8X48SS-OTR-60H	10'	38'	102"
FB8X53SS-OTR-60H	10'	43'	102"

Deck Height 40" • Steel Plate Above Tires

(1) 25,000 lb. Air Brake Axles; Auto Slack Adjust & Park Brake, Non ABS

(1) 25,000 lb. Air Brake Axles; Auto Slack Adjust & Park Brake, ABS

(8) 255-70R-22.5 (16-Ply) Tires on 10-Hole Dual Wheels

Model #	Top Deck	Bottom Deck	Width
FB8X45SS-OTR-80L	10'	35'	102"
FB8X48SS-OTR-80L	10'	38'	102"
FB8X53SS-OTR-80L	10'	43'	102"

Deck Height 35" • Steel Plate Above Tires

(1) 22,500 lb. Air Brake Axles; Auto Slack Adjust & Park Brake, Non ABS

(1) 22,500 lb. Air Brake Axles; Auto Slack Adjust & Park Brake, ABS

(12) ST235-75R-17.5 (18-Ply) Tires on 8-Hole Dual Wheels

Model #	Top Deck	Bottom Deck	Width
FB8X45SS-OTR-80H	10'	35'	102"
FB8X48SS-OTR-80H	10'	38'	102"
FB8X53SS-OTR-80H	10'	43'	102"

Deck Height 40" • Steel Plate Above Tires

(1) 25,000 lb. Air Brake Axles; Auto Slack Adjust & Park Brake, Non ABS

(1) 25,000 lb. Air Brake Axles; Auto Slack Adjust & Park Brake, ABS

(12) 255-70R-22.5 (16-Ply) Tires on 10-Hole Dual Wheels